



## Bellewstown Golf Club Rules and Bye-Laws

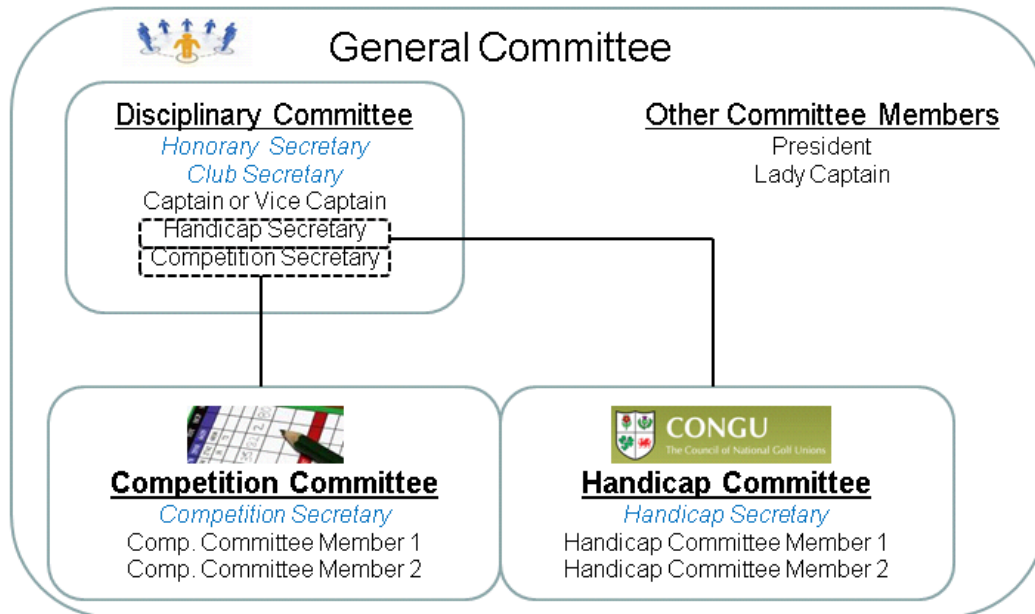
<b>Document Version</b>	<b>V1.3</b>
<b>Last Updated By</b>	Michael Leonard
<b>Version Update History</b>	Update Feb 2019

1	Committee Roles and Responsibilities .....	2
1.1	Club Secretary.....	2
1.2	President.....	2
1.3	AGM.....	2
2	Etiquette Bye Laws.....	3
2.1	Club Colours and Emblem .....	4
2.2	Representative Dress .....	4
2.3	General Dress Code .....	4
2.4	Conduct on the Golf Course .....	4
2.5	Timekeeping.....	4
2.6	Slow Play.....	5
2.7	Priority.....	5
3	Competitions Bye Laws .....	5
3.1	Definition of Major Competitions .....	5
3.2	General Competition.....	6
3.3	Juvenile Members .....	<b>Error! Bookmark not defined.</b>
3.4	Matchplay Competitions .....	7
4	Handicap Bye Laws .....	8
4.1	Non Return of Competition Scorecards.....	8
4.2	Handicap Committee oversight of the awarding of new handicaps .....	8
4.3	Annual Handicap Review.....	8
5	Disciplinary Bye-Laws .....	9
5.1	General.....	9
5.2	Appeal Process .....	9
6	Local Rules .....	10
6.1	Course.....	10
6.2	Placing.....	11
7	Procedure for Bye Law Changes.....	12
7.1	Change Log.....	12
7.2	Change Process .....	15

# 1 Committee Roles and Responsibilities

The following roles are assumed in the golf club in order to enforce these by laws:-

- Golf Course Owner/ Honorary Secretary
- Club Secretary
- Captain
- Vice-Captain
- President
- Handicap Committee
  - Handicap Secretary
- Competition Committee
  - Competition Secretary



Note: the Competition Secretary and Handicap Secretary can delegate to a member of their committee to represent them on the disciplinary committee.

## 1.1 Club Secretary

Added in 2010 the Club Secretary's roles and responsibilities include

- Organise committee meetings
- Recording of full meeting minutes and summary of the meeting minutes for members
- Assisting in the newsletter to members
- Participating as a committee member
- Part of the disciplinary committee
- Act a bank account signatory

## 1.2 President

The term of the president is for 2 years. A new president shall be proposed by the committee and ratified by the members every second AGM.

Candidates for the role of Club President can be selected from a list of Committee Members that have served 3 or more years, irrespective of role or position.

## 1.3 Captain

Selection of Captain: All candidates must have served at least 2 years on the Committee

Vice Captain. Selection of Vice Captain will be by election. Nominees proposed will be voted on by members. A committee will be selected to poll and process all nominees for the Vice-Captain

## **1.4 AGM**

1.3.1 Any member over the age of 18 is entitled to vote at the AGM.

## **2 Etiquette Bye Laws**

If players follow the guidelines in this section, it will make the game more enjoyable for everyone. If a player consistently disregards these guidelines during a round or over a period of time to the detriment of others, it is recommended that the **Disciplinary Committee** considers taking appropriate disciplinary action against the offending player. Such action may, for example, include prohibiting play for a limited time on the course or in a certain number of competitions. This is considered to be justifiable in terms of protecting the interests of the majority of golfers who wish to play in accordance with these guidelines. In the case of a serious breach of etiquette, the Committee may disqualify a player under Rule 33-7 of the rules of golf.

### **Rule 33-7. Disqualification Penalty; Committee Discretion**

A penalty of disqualification may in exceptional individual cases be waived, modified or imposed if the Committee considers such action warranted. Any penalty less than disqualification must not be waived or modified. If a Committee considers that a player is guilty of a serious breach of etiquette, it may impose a penalty of disqualification under this Rule.

## **2.1 Club Colours and Emblem**

- 2.1.1 The official Club Emblem is as displayed above and the Club colours shall be red and white.

## **2.2 Representative Dress**

- 2.2.1 Members representing the Club in competition should wear dark trousers/slacks, white polo shirt (preferably with Club Emblem thereon) and the official Club sweater.

## **2.3 General Dress Code**

- 2.3.1 All members will wear appropriate footwear while playing on the course;
- 2.3.2 Members playing in Club competitions shall at all times wear smart casual clothing, (Trousers/slacks/tailored shorts);
- 2.3.3 The wearing of tracksuit bottoms, non tailored shorts, football jerseys and vest tops by members is discouraged at all times.

## **2.4 Conduct on the Golf Course**

- 2.4.1 Members are forbidden to trespass on lands adjoining the course;
- 2.4.2 Members are required to smooth out their footprints in bunkers, to replace divots and repair their (and any other noticed) pitch marks on greens;
- 2.4.3 Members are expected to acquaint themselves as to Local Rules in place at the time of their play.

## **2.5 Timekeeping**

- 2.5.1 If you are late or cannot make a tee-time, please ring in advance to notify the club.
- 2.5.2 If you miss your tee-time you must wait until the next available slot.
- 2.5.3 The Committee reserve the right to invoke disqualification for breach of this Rule of Golf 6-3. Alternatively the Committee may invoke a penalty for failure to start on time as follows:
- Loss of first hole in matchplay
  - Two strokes at the first hole in Strokeplay.

## **2.6 Slow Play**

- 2.6.1 If a match fails to keep its place on the course and loses more than one clear hole to the players in front it **must** call through the match following;
- 2.6.2 Players searching for a ball should signal the players behind them to pass as soon as it becomes apparent that the ball would not easily be found. **They should not search for the permitted five minutes before doing so.**
- 2.6.3 When play of a hole has been completed, players should **immediately** leave the green and proceed towards the next tee box, the completion of scorecards should not be carried out in the vicinity of the green;
- 2.6.4 Players should ensure that golf bags, trolleys and buggies are left on the correct side of the green to enable direct progress to the next tee box without delay;
- 2.6.5 If there is a doubt about a ball being “out of bounds” or lost outside of a hazard it would expedite play if a “provisional ball”, (it is the player’s responsibility to clearly state that the second ball being played is a “provisional ball”), was played before proceeding.
- 2.6.6 Players should ensure that Bags, Trolleys and Buggies are kept off the greens and tee boxes.

## **2.7 Priority**

- 2.7.1 Members shall not “cut-in” while a competition is in progress without permission of reception;
- 2.7.2 Member shall not “cut-in” on any part of the course unless the previous hole is clear from tee to green.

## **3 Competitions Bye Laws**

Competition Bye Laws are enforced by the **Competition Committee**.

The Competition Committee governs the conditions under which all competitions are played

### **3.1 Definition of Major Competitions**

The following competitions are considered Major Competitions and will be used for player of the year points:-

- Captain’s Prize
- Professional’s Prize
- President Prize
- Vice-Captains Prize
- 36 hole Nett Club Championship
- Monthly Medals
- Only full members can win the overall prize in a major competition

## 3.2 General Competition

- 3.2.1 No member can win any overall prize in the following competitions: - Vice-Captains, Captains, President, Professional and Club Championship without playing three qualifying club competitions in the calendar year.
- Note: A qualifying competition is a competition where your handicap can be adjusted.
- 3.2.2 A time sheet shall be in operation for all competitions, members should, where possible, play competition in a minimum **three** ball format; Majors/Medals last tee off 1pm, unless earlier as decided by the competition committee
- 3.2.3 The usage of motorised buggies is prohibited in the Major competitions(as in 3.1 above) and in the Club Championship competition unless a player is in possession of a Medical Certificate stating that he/she is unfit to walk; The use of caddies is permitted in competitions except those competitions referred to in 3.1 above. Members are responsible for the safety and conduct of caddies while on the course Ties shall be decided by the Committee, whose decision is final.
- 3.2.4 When entering a competition the member must
- Enter through swipe card (or PIN No.) on the computer (singles competition)
  - Pay his competition entry fee prior to playing;
- 3.2.5 Having completed his round, the player must:
- Complete his scorecard properly i.e. Date, Name, Competition, Handicap, Markers Signature and Players Signature (omission of any of the aforementioned details will result in the player being disqualified under Rule 6-6-b) ;
  - Enter his score on the computer (singles competition);
  - All cards must be returned without delay to the competition box provided for that purpose and cards so returned cannot be altered subsequently
- 3.2.6 It is obligatory that a member who enters his name on a club competition entry sheet submits a completed scorecard – **cards not entered onto the computer will be classified as a non return.**
- 3.2.7 The 2s competition is a separate competition that is managed by the Club. If you are disqualified from the normal competition your 2s still count in the 2s competition once you have paid.
- 3.2.8 Open Draw players must play at time allocated. Players to commit to open draw unless Comp committee is notified no later Thursday 4.00 p.m. prior to Competition Draw. Player may ask for allocated tee time before draw. D.Q. otherwise
- 3.2.9 Relief from broken ground as a result of course maintenance equipment marks. Nearest point of relief, not exceeding 1 club length.
- 3.2.10 Eligibility: to be eligible to compete in an Open Singles Qualifying Competition at an Away Club, with the exception of GUI Tournaments, a Member of a GUI Affiliated Golf Club must have returned at least three scores in Singles Qualifying Competitions at his Home Club, at any time on or after the corresponding date one year before the Singles Qualifying Competition at the Away Club.
- 3.2.11 Entries: The use of a GUI member card is mandatory for members of clubs affiliated to the Golfing Union of Ireland for entry into all Open Singles Qualifying Competitions, which shall be by computer entry and uploaded to the CDH following close of competition.

### **3.3 Juvenile Competition**

- 3.3.1 Juvenile/Student/Junior members with a handicap of 19 or over are not eligible to win outright any adult individual club competition
- 3.3.2 One juvenile per timeslot is allowed when competing in adult single and 3-person team competitions;
- 3.3.3 Juveniles must partner adult members in all non-Singles club championships.
- 3.3.4 Juvenile members can win player of the year
- 3.3.5 Juveniles scorecards must be marked and signed by an unrelated adult club member;
- 3.3.6 The recording of Juveniles scorecards onto the computer must be supervised by the marker;.

### **3.4 Matchplay Competitions**

- 3.4.1 Entrance fees for knockout competitions must be paid prior to the draw being made.
- 3.4.2 All rounds in matchplay competitions shall be played from the medal tees unless otherwise decided by the Committee;
- 3.4.3 In the event of tie holes, the 1<sup>st</sup> (First) hole shall be the 19<sup>th</sup> (Nineteenth) and the match shall continue until a hole is won, taking strokes as on the scorecard;
- 3.4.4 In any competition where play is ordinarily spread over a prolonged period (e.g. matchplay) a competitor must play off his current up-to-date GUI handicap unless otherwise specified by the committee competition;
- 3.4.5 In match play the onus is on the player drawn on the top to contact the other player. If the top player on two separate occasions tries to contact the other player to agree dates to no avail or he should contact the member of the Competition Committee, assigned to manage the matchplays (if the player does not know, contact the Competition Secretary) a week prior to the deadline. The competition committee will then intercede and decide on one of the following actions:-
  - Get the players to agree on a date prior to the deadline.
  - Rule against one of the players and give a walkover to the other.
  - Disqualify both players
  - Under unusual circumstances give an extension
- 3.4.6 If the top player fails to contact the other player to agree dates within one week to the deadline, the player drawn lower in the draw should contact a member of the competition committee as in 3.4.5. The competition committee will then intercede as in 3.4.5 also
- 3.4.7 In the event that the match has not been played by the deadline (as in 3.4.5 and 3.4.6) and neither player contacts the competition committee both players shall be disqualified with no appeal.

## **4 Handicap Bye Laws**

Handicap Bye Laws are enforced by the **Handicap Committee**.

### ***4.1 Non Return of Competition Scorecards***

Failure by club members to return competition cards during the period March – October shall incur the following sanctions:

- 2<sup>nd</sup> Failure to return card – Verbal warning from Handicap Secretary/Committee
- 3<sup>rd</sup> Failure to return card – Written warning from Handicap Secretary/Committee
- 4<sup>th</sup> Failure to return card – Suspension of **CLUB** handicap for 2 Weeks
- 5<sup>th</sup> Failure to return card – Suspension of **CLUB** handicap for 4 Weeks
- 6<sup>th</sup> Failure to return card – Suspension of **GUI** handicap for 2 weeks

In the event of further failures to return cards the member shall be requested to attend a meeting with the Disciplinary Committee to discuss their failure to submit cards following competitions.

### ***4.2 Handicap Committee oversight of the awarding of new handicaps***

When playing to qualify for a handicap, all the cards will have to be signed by a GUI Member and one of these cards must be signed by a club member deemed acceptable by the handicap committee

### ***4.3 Annual Handicap Review***

The decision of the handicap committee with regards to reducing or increasing player's handicaps at the end of the year is final.



## **5 Disciplinary Bye-Laws**

Disciplinary Bye Laws are enforced by the **Disciplinary Committee**.

### **5.1 General**

- 5.1.1 Infringements of the Rules of Golf and/or the Bye Laws of the Club may result in disciplinary action being taken against the offending member.
- 5.1.2 A member may make a complaint against one or more members. This complaint must be put in writing and sent to the Honorary or Club Secretary for consideration.
- 5.1.3 Should the Disciplinary Committee agree that disciplinary action is warranted then the member shall be invited, in writing, to attend a disciplinary hearing of the Disciplinary Committee in order that the facts can be ascertained;
- 5.1.4 Where a member fails to attend the disciplinary hearing then the Disciplinary Committee shall make a summary judgement based on the facts to hand;
- 5.1.5 Where disciplinary action is sanctioned the member will be notified by letter of the decision and of the date from which it will take effect, which will be not sooner than 7 days from the postage date of the notifying letter.
- 5.1.6 All disciplinary actions sanctioned by the Disciplinary Committee shall be subject to the Appeal Process detailed at 5.2 below.

### **5.2 Appeal Process**

- 5.2.1 Any member in receipt of a disciplinary action has the right to appeal the action by submitting in writing to the Honorary or Club Secretary their intention to do so prior to the effective date of the action.
- 5.2.2 The Honorary or Club Secretary on receipt of a notice of appeal will notify the Disciplinary Committee members to convene a meeting in order to hear the member's appeal;
- 5.2.3 The meeting should be held within 14 days of notice of appeal being received;
- 5.2.4 The member appealing the disciplinary action must attend in person at the date and time notified to him by the Honorary or Club Secretary,
- 5.2.5 Until the appeal hearing the disciplinary action shall not be enforced
- 5.2.6 The outcome of the appeal shall be notified to the member following the appeal hearing and a letter shall issue confirming the appeal decision;
- 5.2.7 In the event of the appeal being rejected or the member failing to attend the meeting the disciplinary action shall come into effect immediately.

## 6 Local Rules

Local Rules generally related to the course and supplement the rules of golf. The **Golf Course Owner** is responsible for managing and changing these local rules

### 6.1 Course

#### 6.1.1 Out of Bounds

- a) Over electric fence along 1<sup>st</sup>, 2<sup>nd</sup>, 3<sup>rd</sup>, 7<sup>th</sup>, 8<sup>th</sup>, 10<sup>th</sup>, 11<sup>th</sup>, 12<sup>th</sup>, 13<sup>th</sup>, 14<sup>th</sup> and behind the 5<sup>th</sup> green
- b) Boundary ditches and beyond
- c) Car Park and entrance road
- d) Practice green, driving range

#### 6.1.2 Immovable Obstructions (Rule 24-2):

Marker posts, course equipment, bins, furniture

#### 6.1.3 Free drop from all staked trees under Rule 24-2

Free drop from electric boundary fence where it interferes with swing

#### 6.1.4 Stones in bunkers are movable obstructions Rule 24-1

#### 6.1.5 Water Hazards (Rule 26-1)

Water Hazards marked by yellow stakes.

Lateral Waters Hazards marked by red stakes

#### 6.1.6 A ball lying on a tee or putting green other than that of the hole being played must be lifted and dropped, without penalty, within one club length of and not nearer the hole than the nearest point of relief and not in a hazard or on a putting green. **Exception:**

6.1.7 if a competitor returns a score for any hole lower than actually taken due to failure to include one or more penalty strokes that, before returning his score card, he did not know he had incurred, he is not disqualified. In such circumstances, the competitor incurs the penalty prescribed by the applicable rule, but there is no additional penalty for a breach of rule 6-6d. This exception does not apply when the applicable penalty is disqualification from the competition.

#### 6.1.8 G.U.R. Rule 25-1. All areas marked by white lines

#### 6.1.9 Free drop from the stone on the 18<sup>th</sup> Fairway (Rule 24-2)

#### 6.1.10 Distance Markers

Distance markers to front of green Red 100yds, Yellow 150yds, Blue 200yds

#### 6.1.11 Loose impediments

Loose impediments may be removed from sand bunkers;

#### 6.1.12 Plugged Balls

Plugged balls may be lifted, cleaned and dropped within one club length no nearer the hole without penalty. This relief applies only "through the green" situations and not when the ball is plugged in hazards or bunkers.

#### 6.1.13 Use of distance measuring devices

Measuring Devices are allowed once they are not used for any other purpose that is prohibited by rule 14.3

### 6.1.13 Accidental Movement of a Ball on a Putting Green

Rules 18-2, 18-3 and 20-1 are modified as follows:

When a player's ball lies on the putting green, there is no penalty if the ball or ball-marker is accidentally moved by the player, his partner, his opponent, or any of their caddies or equipment.

The moved ball or ball-marker must be replaced as provided in Rules 18-2, 18-3 and 20-1.

This Local Rule applies only when the player's ball or ball-marker lies on the putting green and any movement is accidental.

Note: If it is determined that a player's ball on the putting green was moved as a result of wind, water or some other natural cause such as the effects of gravity, the ball must be played as it lies from its new location. A ball-marker moved in such circumstances is replaced

## **6.2 *Placing***

### 6.2.1 Preferred Lies (Qualifying Competitions)

A ball coming to rest on a FAIRWAY may be lifted, cleaned and placed within six (6) inches (not nearer the hole).

### 6.2.2 Winter Rules (Non-Qualifying Competitions)

A ball coming to rest on a FAIRWAY may be lifted, cleaned and placed within six (6) inches (not nearer the hole);

A ball coming to rest in the ROUGH may be lifted, cleaned and placed within six (6) inches (not nearer the hole);

6.2.4 12 Hole winter competitions, lost ball on fairway are playing. Player may take a free drop where estimated ball lost as agreed with playing partner

6.2.5 12 Hole Winter competitions bunkers out of play. Nearest point relief out of bunker not nearer hole

## **7 Procedure for Bye Law Changes**

### **7.1 Change Log**

This log should be updated for any changes made to the document. Changes can be grouped under a version e.g. 1.1 contains many changes

#### **2019**

- 7.1.1 Majors/Medals last tee off 1pm, unless earlier as decided by the competition committee 3.2.2

Changes local rules reflect new rules as suggested by GUI

Exception Rule 6-6

Rule 18-2, accidental movement of ball

Bunkers out of play 12 hole winter competitions

Lost ball 12 hole winter competitions on fairway playing.

#### **2018 No changes**

#### **2017 Compulsory changes from GUI February**

- 3.2.16 Eligibility: to be eligible to compete in an Open Singles Qualifying Competition at an Away Club, with the exception of GUI Tournaments of the Union Bye Laws, a Member of a GUI Affiliated Golf Club must have returned at least three scores in Singles Qualifying Competitions at his Home Club, at any time on or after the corresponding date one year before the Singles Qualifying Competition at the Away Club.

- 7.1.2 Entries: The use of a GUI member card is mandatory for members of clubs affiliated to the Golfing Union of Ireland for entry into all Open Singles Qualifying Competitions, which shall be by computer entry and uploaded to the CDH following close of competition.

#### **2016 AGM**

**1.2** Candidates for the role of Club President can be selected from a list of Committee Members that have served 3 or more years, irrespective of role or position.

**1.3** Vice Captain. Selection of Vice Captain will be by election. Nominees proposed will be voted on by members. A committee will be selected to poll and process all nominees for the Vice-Captain

#### **2015 AGM**

- 7.1.3 Use of distance measuring devices  
Measuring Devices are allowed once they are not used for any other purpose that is prohibited by rule 14.3

- 1.3 Selection of Captain All candidates must have served at least 2 years on the Committee

Relief from broken ground as a result of course maintenance equipment marks. Nearest point of relief, not exceeding 1 club length.

#### **2013**

Local rule Grant relief without penalty from the electric fence

## 7.1.4 2011

2011-01	General Committee	Change the term for President to 2	Section 1.2 President	The term of the president is for 2 years. A new president shall be proposed by the committee and ratified by the members every second AGM.
Out 2011-02	General Committee	AGM	Section 1.3	Any member over the age of 18 is entitled to vote at the AGM.
2011-03	General Committee	Allowing Caddies in non-Majors	Section 3 General Competitions	New Clause: The use of caddies is permitted in competitions except those competitions referred to in 3.1 above. Members are responsible for the safety and conduct of caddies while on the course
2011-04	General Committee	Change the signed procedure so that signing in on the paper sheet is no longer required.	Section 3 General Competitions	Changed 3.2.7 to "Enter through swipe card (or PIN No.) on the computer (singles competition)"
2011-05	General Committee	New rules regarding Juvenile	Section 3 Juvenile	New section: Juveniles scorecards must be marked and signed by an unrelated adult club member; The recording of Juveniles scorecards onto the computer must be supervised by the marker;
2011-06	General Committee	Non Return of cards changed to be less harsh	Section 4 Handicap Committee	Nothing happens for 1 <sup>st</sup> Failure
2011-07	General Committee	New local rule for distance measuring devices	Local rules	New clause 6.1.11 Distance-Measuring Devices:  For all play at this course, a player may obtain distance information by using a device that measures distance only. If, during a stipulated round, a player uses a distance-measuring device that is designed to gauge or measure other conditions that might affect his play (e.g., gradient, wind speed,

				temperature, etc.), the player is in breach of Rule 14-3, for which the penalty is disqualification, regardless of whether any such additional function is actually used
2011-08	General Committee	Update local rules for course changes	Local Rules	Updated to match scorecard

7.1.5 2010

<b>No</b>	<b>Propose By</b>	<b>Reason for change</b>	<b>Sections in Bye Laws effected</b>	<b>Description of change</b>
2010-01	General Committee	Update bye laws to include the role of President	Section 1. New section for President	President is included in the club roles term of the president is 3 years.
2010-02	General Committee	Update bye laws to include the role Club Secretary	Section 1. New section for Club Secretary	Added in 2010 the Club Secretary's roles and responsibilities include <ul style="list-style-type: none"> <li>• Organise committee meetings</li> <li>• Recording of full meeting minutes and summary of the meeting minutes for members</li> <li>• Assisting in the newsletter to members</li> <li>• Participating as a committee member</li> <li>• Part of the disciplinary committee</li> <li>• Act a bank account signatory</li> </ul>
2010-03	General Committee	Clarification on the complaints procedure	Section 5.1	5.1.2 "and sent to the Discipline Committee" should be replaced with "and sent to the Honorary or Club Secretary"
2010-04	Handicap Committee	To ensure that the handicap committee have oversight on new handicaps	Section 4 – new section 4.2 Handicap Committee oversight of the awarding of new handicaps	When playing to qualify for a handicap, all the cards will have to be signed by a GUI Member and one of these cards must be signed by a club member deemed acceptable by the handicap committee.
2010-05	Competition Committee	To ensure that new members handicap	Section 3.2.1	A new member cannot win in his first 3 competitions after joining the club.
2010-06	Competition Committee	To encourage members to play in standard competitions	3.2.2	No member can win any overall prize in the following competitions: - Vice, Captains, President,

				Professional, Club Champion without playing three qualifying club competitions in the calendar year.  Note: A qualifying competition is a competition where your handicap can be adjusted.
2010-07	Competition Committee	Clarity over player of the year points	Update to 3.1	36 hole nett club championship score is included as a major and counts for player of the year points.
2010-08	Competition Committee	To clarify on the rights for full and associate members	New Section 3.1.1	Only full members can win the overall prize in a major competition
2010-10	Competition Committee	Provide clarity on the 2s competition	3.2 – new section added	The 2s competition is a separate competition that is managed by the Club. If you are disqualified from the normal competition your 2s still count in the 2s competition once you have paid.
2010-11	Competition Committee	Clarification on the fact that Juniors can win play of the year	Section 3.3	3.3.4 Juvenile members can win player of the year
2010-12	General Committee	Clarification on voting rights	New section 1.3	Only Full members can vote in AGMS

## **7.2 Change Process**

The Committee, in consultation with the Course Owner, shall from time to time to make, alter and/or repeal such Bye-Laws as it considers necessary. This process should start with a Bye Law Change Request that is first approved by the golf club owner, then the general committee and then at the AGM. The bye law is updated and the change log amended.

